

\$0 - 14220 112 Av Nw, Edmonton

MLS® #E4314132

\$0

Bedroom, Bathroom, 2,066 sqft
Office on 0.00 Acres

Huff Bremner Estate Industrial, Edmonton, AB

â€¢ 2 spaces available - 1,113 sq.ft. or 2,066 sq.ft. â€¢ Tenants have access to common area lounge, auditorium and 4 secure levels of parking â€¢ Lower Level is open concept available immediately â€¢ Second floor is currently shell space ready for interior improvements â€¢ High level of security â€¢ Recently upgraded elevator â€¢ Quick access to Yellowhead Trail, Stony Plain Road and St.Albert Trail â€¢ Parking ratio is approximately 5 stalls per 1,000 sq.ft.

Built in 1950

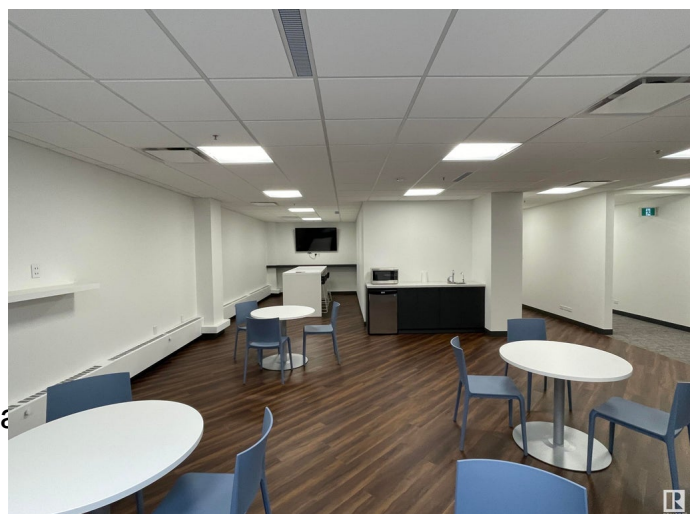
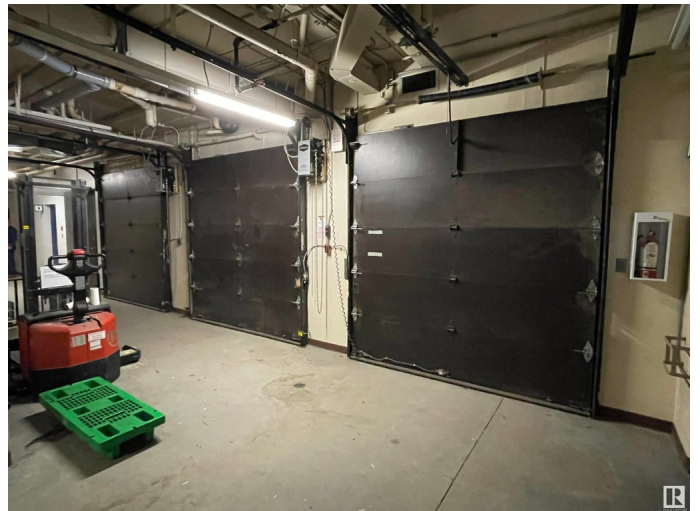
Essential Information

| | |
|----------------|----------|
| MLS® # | E4314132 |
| Square Footage | 2,066 |
| Acres | 0.00 |
| Year Built | 1950 |
| Type | Office |

Community Information

| | |
|-------------|--------------------------------|
| Address | 14220 112 Av Nw |
| Area | Edmonton |
| Subdivision | Huff Bremner Estate Industrial |
| City | Edmonton |
| Province | AB |
| Postal Code | T5M 2T8 |

Exterior



Construction Brick/Masonry

Additional Information

Date Listed September 20th, 2022

Zoning IB

DATA IS DEEMED RELIABLE BUT IS NOT GUARANTEED ACCURATE BY THE REALTORS® ASSOCIATION OF EDMONTON. COPYRIGHT 2024 BY THE REALTORS® ASSOCIATION OF EDMONTON. ALL RIGHTS RESERVED.Trademarks are owned or controlled by the Canadian Real Estate Association (CREA) and identify real estate professionals who are members of CREA (REALTOR®, REALTORS®) and/or the quality of services they provide (MLS®, Multiple Listing Service®)

Listing information last updated on May 14th, 2024 at 8:32pm MDT